

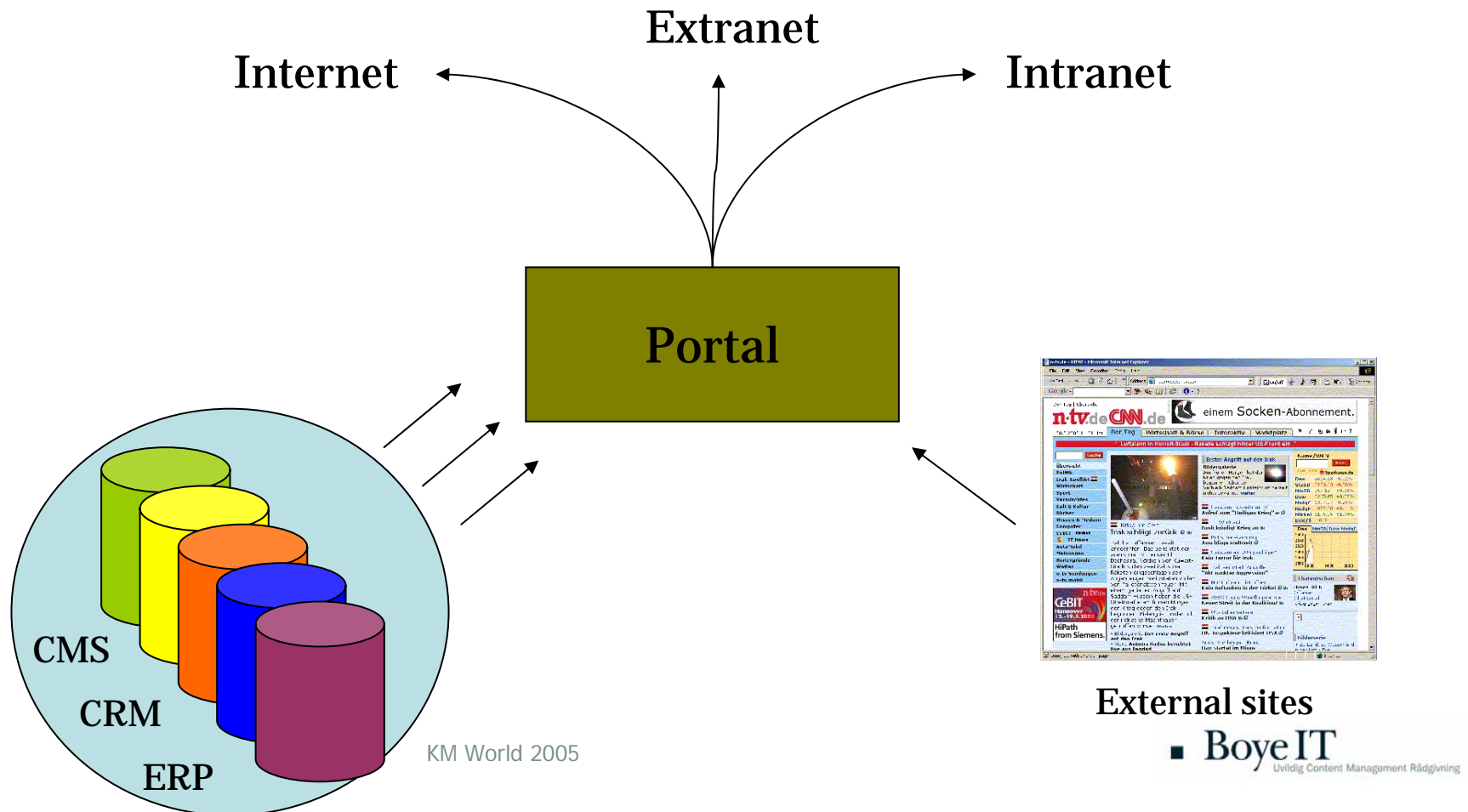
Technical Architectures: Content Management, Portals and Content Integration Part I

Janus Boye

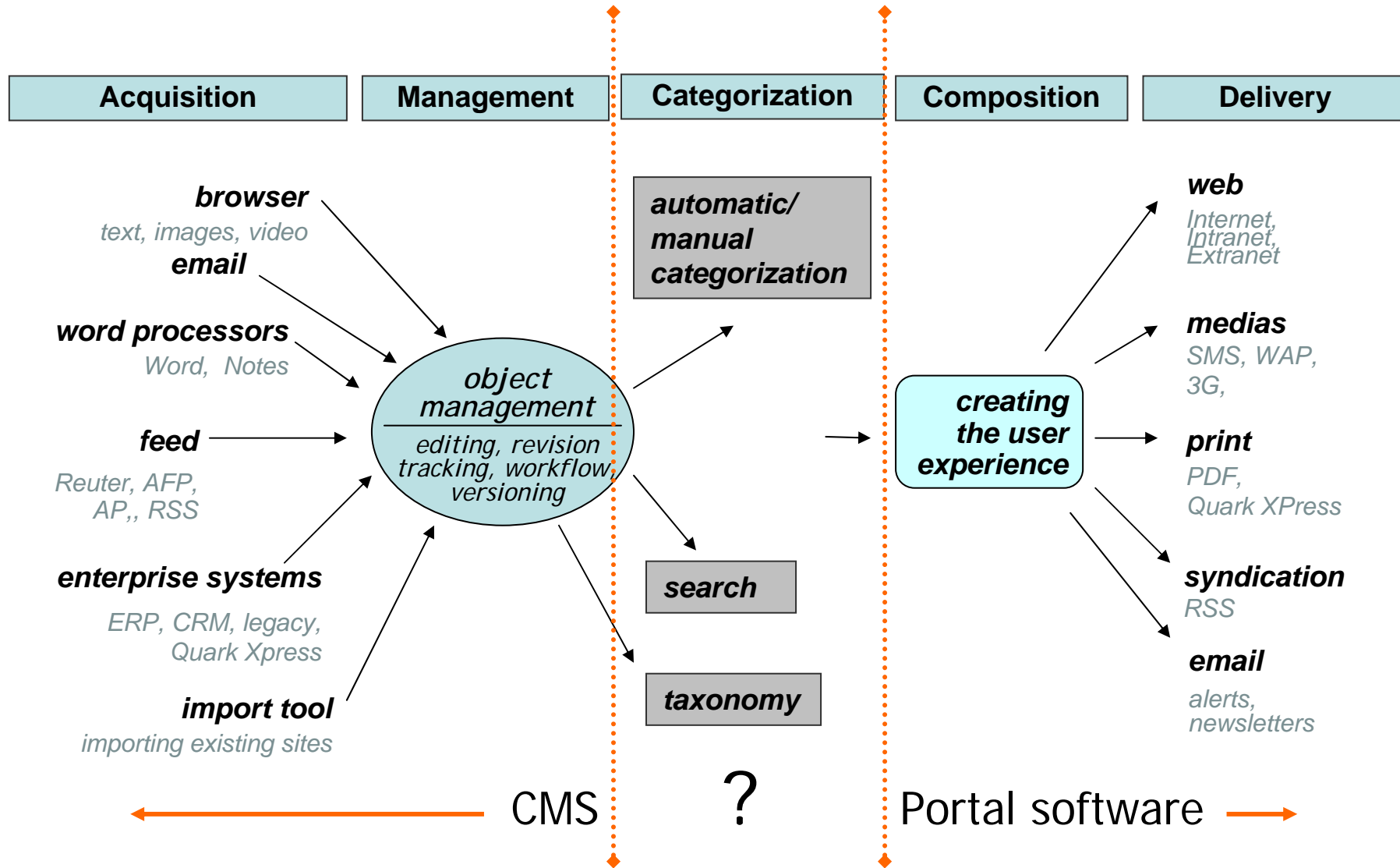
KM World 2005

What is it?

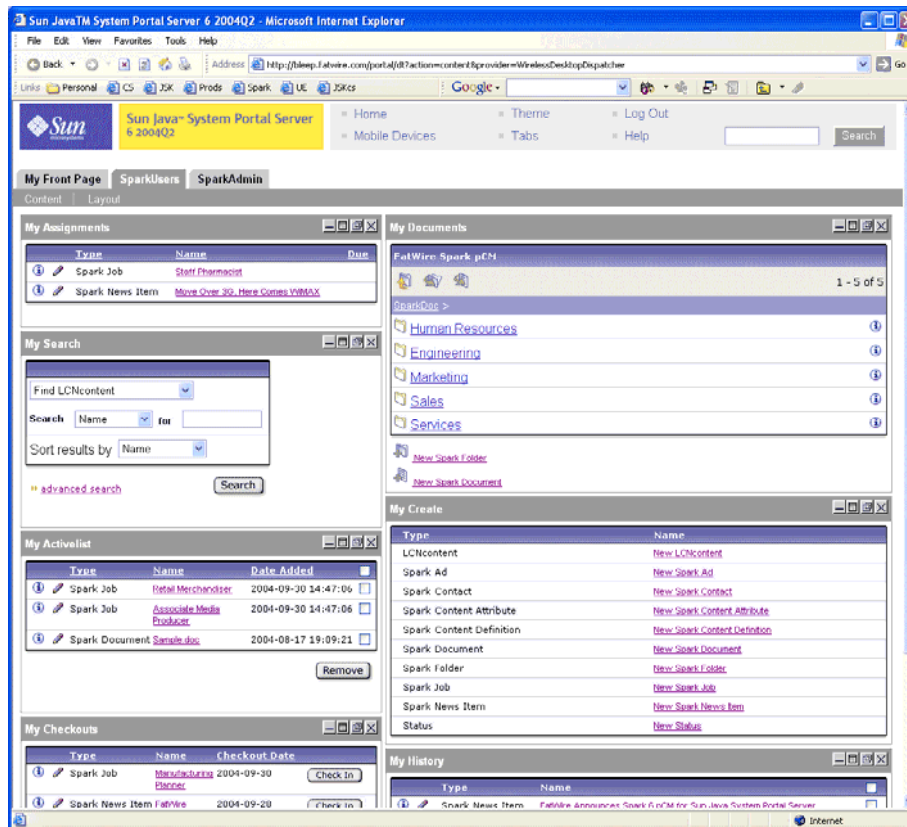
A framework for integrating applications and processes across organisational boundaries



What do you get?



An example



- FatWire CS with Sun Portal

- Super-user interface with training required

- What does all the buttons do?

- Consider:

- Decentralization, motivation, getting the job done....

Integration: Push or Pull

- Push
 - Content is published to the portal
 - CMS is not business-critical
 - Typically used with different solutions

- Pull
 - Content is retrieved at request time
 - Real-time
 - Security
 - Can be limiting (read-only) and not vendor-neutral

Consider in either case - Common mistakes

- Think about performance upfront.
 - There is no silver bullet. Consider using static content
- Follow basic web guidelines
 - URLs, bookmarks, browser-dependency
- Frequent and major time-consuming updates
- Ensure clear-cut division between solutions
- Integration is more expensive than development
- Avoid "CMS" or "Portal" as project name
- Test at usual user screen resolutions

..... Iterate, learn, improve

KM World 2005

An example

Maersk Sealand shipping containers worldwide - Microsoft Internet Explorer

Filer Rediger Vis Foretrukne Funktioner Hjælp

Adresse http://www.maersksealand.com/HomePage/appmanager/;JSESSIONID_ADMINTOOLS=D6LQCMG2BT5qL1bMI2rvILT9dSxk2PIRH6HL1YLy8qk Hyperlinks

msn Søg på internettet

Maersk Sealand shipp...

MAERSK SEALAND Sitemap Site search

Home Our services News room Careers About us Contact Local websites **Do business**

» Log in Register

» Control centre

» Tracking

» Schedules

» Rates

» Booking

» Shipping instructions

» Transport documents

» Statement

» Rate of exchange

» Reports

» Claims

» Profile

» Learn more

Help & Assistance

» Live Help Let us help you in an on-line chat.

» FAQ

News room

Here you can find the latest Maersk Sealand news, and you can also subscribe to news from Maersk Sealand.

Media enquiries

Maersk Sealand
Marketing & Communication
E-mail: [Marketing & Communication \(cenmktcomiec@maersk.com\)](mailto:Marketing & Communication (cenmktcomiec@maersk.com))
Phone: +45 3363 5537 or +45 3363 5570
Telefax: +45 3363 4722

Office address:
Esplanaden 50
1098 Copenhagen K
Denmark

Media enquiries concerning the A.P. Moller - Maersk Group may be directed to:
A.P. Moller - Maersk

News room

» News

Related reading

» [Subscribe to news](#)

» [Photo gallery](#)

» [Awards](#)

» [Facts and figures](#)

External links

» [Financial information](#)

Print version

Inter-portlet communication - a complex problem

(e.g. one portlet telling another what to display)

- Getting the different portlets on the screen to talk to each other is quite hard
- Today's portal is more a set of typically very disconnected views, rather than a dashboard to an integrated machine
- JSR-168: Portlet specification fails to deliver

Learn more

cmswatch.com

- > "Practical Ideas for CMS Project Success"
- > "Portal Software: Passing Fad or Real Value?"
- > "JSR-170: What's in it for me?"
- > CMS Report
- > Upcoming Portal Report

cmforum.dk

- > 50+ articles and much more in Danish

janusboye.dk

- > "Top 5 Reasons Content Management Projects Fail"
- > "Mature Content Management"

Contact info: Janus Boye, jb@boyeit.dk, +45 36 96 54 20
See you at the social events!